



Phyllis Ann Wuorenma

August 27, 1946 - November 8, 2024

Phyllis Ann Wuorenma November 8, 2024 – Age 78, of Plymouth, Michigan
Phyllis Ann Wuorenma, age 78, passed away peacefully on November 8, 2024, surrounded by the love of her family. Phyllis was a cherished wife to the late James Wuorenma, with whom she shared a beautiful life, full of love and devotion. Together, they built a warm and welcoming home and created a family legacy grounded in care and deep connection.

Phyllis was a loving mother to her two sons, Ryan Wuorenma and Ken Wuorenma, who, alongside Ken's wife, Kelly, carry forward her values of kindness and resilience. She was a proud and doting grandmother to Jack and Hazel, who brought immense joy to her life. Her grandchildren were the light of her world, and she delighted in their every accomplishment.

Phyllis is also survived by her beloved siblings: Linda (Dan) Reilman, Peggy Winfield and her husband, Jim, Carlene Kalebaugh and her husband, George, and Phil (Cathy) Caudill. Each of them held a special place in her heart, and she maintained cherished bonds with them throughout her life.

Born in Glomawr, Kentucky, Phyllis always carried a deep connection to her roots. Her journey eventually led her to a fulfilling career as an Executive Assistant in the banking industry, where she was known for her professionalism, unwavering dedication, and genuine kindness. Phyllis touched the lives of her colleagues with her warmth and commitment

Those wishing to share a memory or tribute can do so through the "Share a Memory" tab on this page. Phyllis will be remembered for her warmth,

compassion, and the legacy of love she leaves behind in her family and friends.

Memorial contributions may be made to the Michigan Parkinson Foundation, 30400 Telegraph Road, Suite 150, Bingham Farms, MI 48025-5819 or to the Alzheimer's Association, Greater Michigan Chapter, 25200 Telegraph Road Suite 100, Southfield, MI 48033-7443.

Cemetery Details

Great Lakes National Cemetery

4200 Belford Road
Holly, MI 48442

Previous Events

Burial

NOV **15**. 11:00 AM - 12:00 PM (ET)

Great Lakes National Cemetery
4200 Belford Road
Holly, MI 48442

Tribute Wall

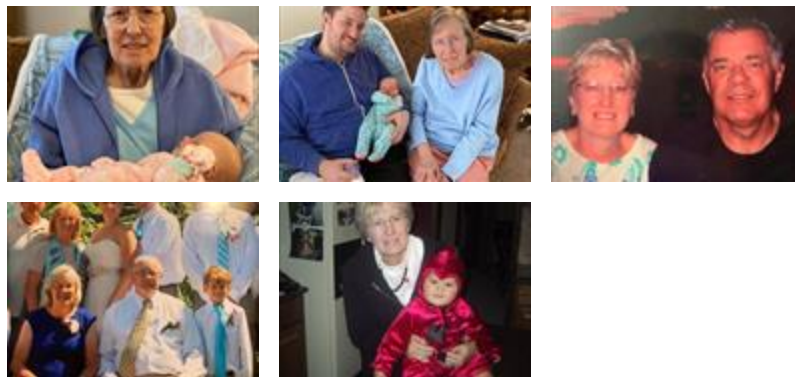
NI

“ Will be missed dearly. Love and prayers to you all. Memories last forever

nikki - November 15, 2024 at 09:16 PM

KW

“ Few more pictures of Phyllis.



Ken Wuorenma - November 13, 2024 at 08:11 PM